



# SAP Business One Road Map

January 2024

PUBLIC



# Legal disclaimer

The information in this presentation is confidential and proprietary to SAP and may not be disclosed without the permission of SAP. This presentation is not subject to your license agreement or any other service or subscription agreement with SAP. SAP has no obligation to pursue any course of business outlined in this document or any related presentation, or to develop or release any functionality mentioned therein. This document, or any related presentation, and SAP's strategy and possible future developments, products, and platforms, directions, and functionality are all subject to change and may be changed by SAP at any time for any reason without notice. The information in this document is not a commitment, promise, or legal obligation to deliver any material, code, or functionality. This document is provided without a warranty of any kind, either express or implied, including but not limited to the implied warranties of merchantability, fitness for a particular purpose, or noninfringement. This document is for informational purposes and may not be incorporated into a contract. SAP assumes no responsibility for errors or omissions in this document, except if such damages were caused by SAP's willful misconduct or gross negligence.

All forward-looking statements are subject to various risks and uncertainties that could cause actual results to differ materially from expectations. Readers are cautioned not to place undue reliance on these forward-looking statements, which speak only as of their dates, and they should not be relied upon in making purchasing decisions.

For all recent and planned innovations, potential data protection and privacy features include simplified deletion of personal data, reporting of personal data to an identified data subject, restricted access to personal data, masking of personal data, read access logging to special categories of personal data, change logging of personal data, and consent management mechanisms.

# About SAP road maps

Companies today are planning their digital journeys – transforming business models, reengineering business processes, and reimagining work.

**SAP road maps** highlight innovations that may help you plan and implement your digital journey. They span products relevant to lines of business in your industry and explain how our innovations may add value to your business.

In our road maps, you can learn about our innovations along four different timelines:

1. **Recent innovations** for our products that have been launched in the past weeks or months and can already be purchased
2. **Planned innovations** for our products that are intended to be launched in the short term or midterm
3. **Product direction**, providing a long-term perspective on high-level development plans for innovations for our solutions – inspired by your requirements
4. **Product vision**, providing a high-level and long-term business perspective on innovations for our products

# Table of contents

## Product overview

- Product description
- Digital enablers
- Recent innovations

## Product direction

- Product areas of future investment
- Product road map overview
- Planned innovations



# Product overview

PUBLIC

This presentation and SAP's strategy and possible future developments are subject to change and may be changed by SAP at any time for any reason without notice. This document is provided without a warranty of any kind, either express or implied, including but not limited to the implied warranties of merchantability, fitness for a particular purpose, or noninfringement.



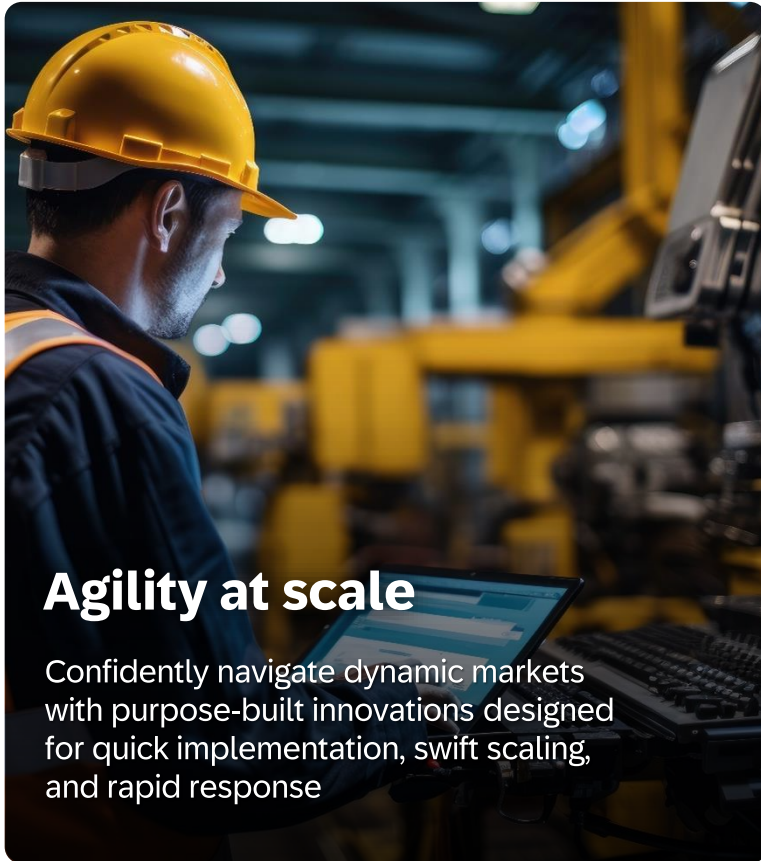


# Help the world run better and improve people's lives



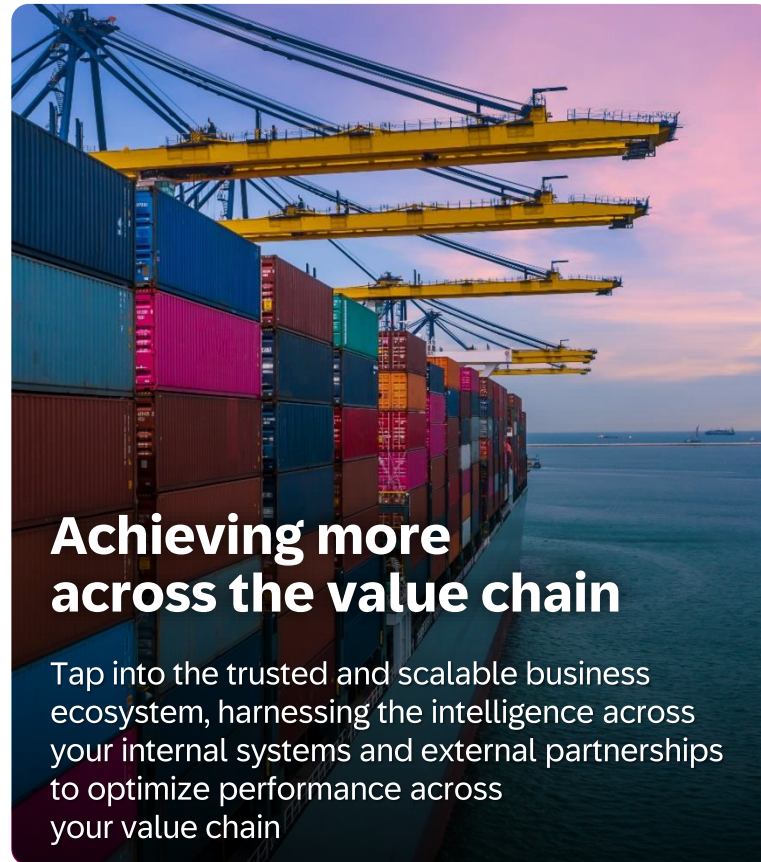
Our vision

# We bring out the best in every business



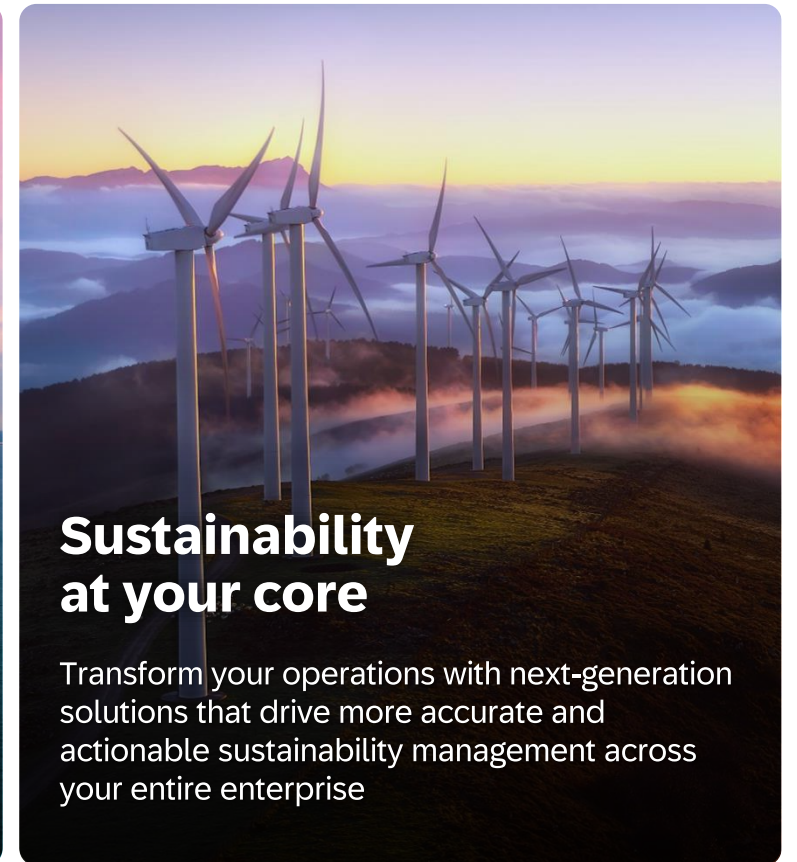
**Agility at scale**

Confidently navigate dynamic markets with purpose-built innovations designed for quick implementation, swift scaling, and rapid response



**Achieving more across the value chain**

Tap into the trusted and scalable business ecosystem, harnessing the intelligence across your internal systems and external partnerships to optimize performance across your value chain



**Sustainability at your core**

Transform your operations with next-generation solutions that drive more accurate and actionable sustainability management across your entire enterprise

# SAP's best-selling ERP solution by number of customers

---

Used by **78,000+** customers  
with **1.2+** million users

---

---

~**300** partners  
with **500+** solutions

---

---

Available as **50** country  
localizations and in  
**28** languages

---

---

**360+** large enterprises  
running SAP Business One in  
**7,000+** subsidiaries

---

---

Implemented by **850+**  
partners worldwide

---

---

SAP Business One used in  
**170+** countries

---

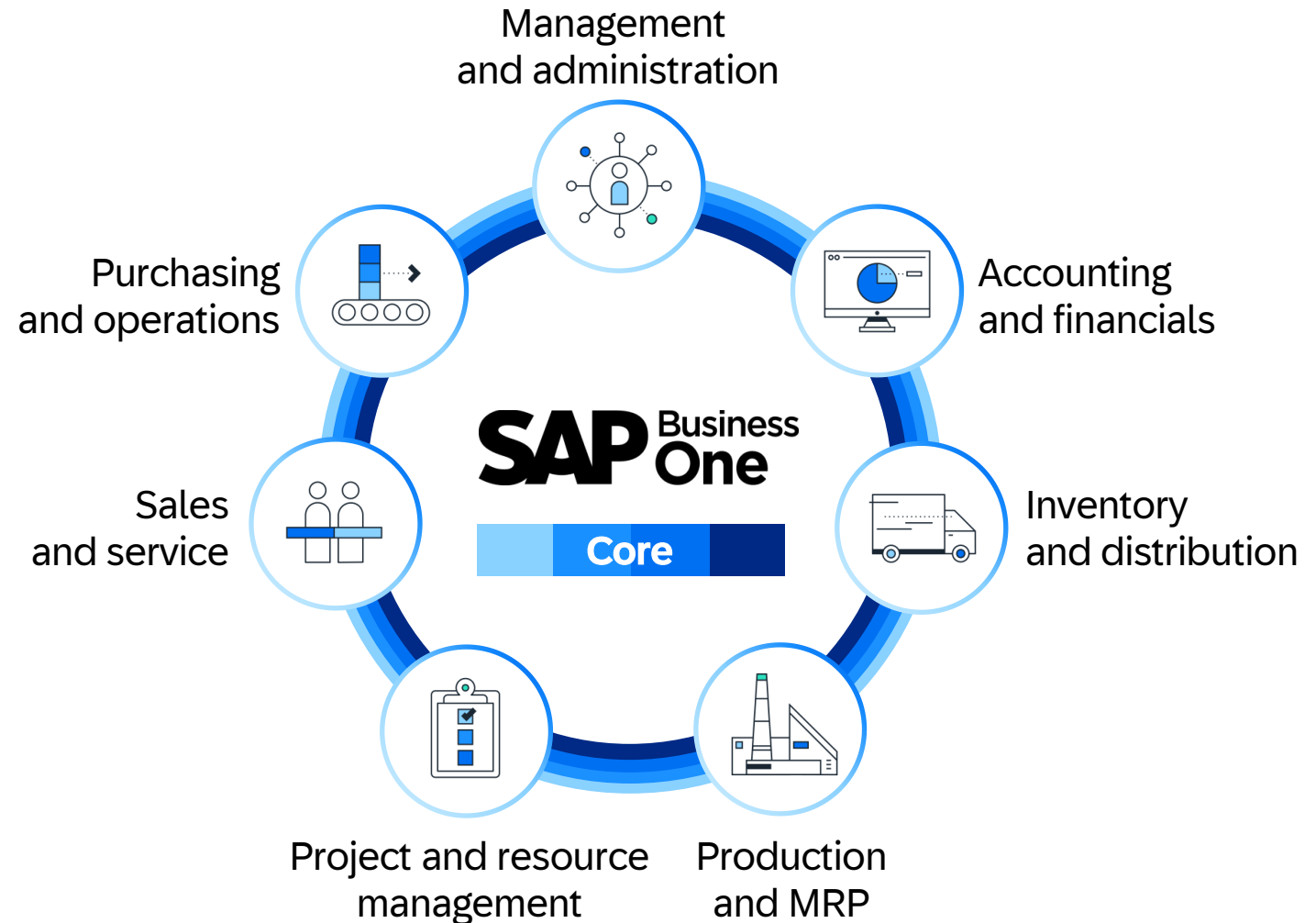




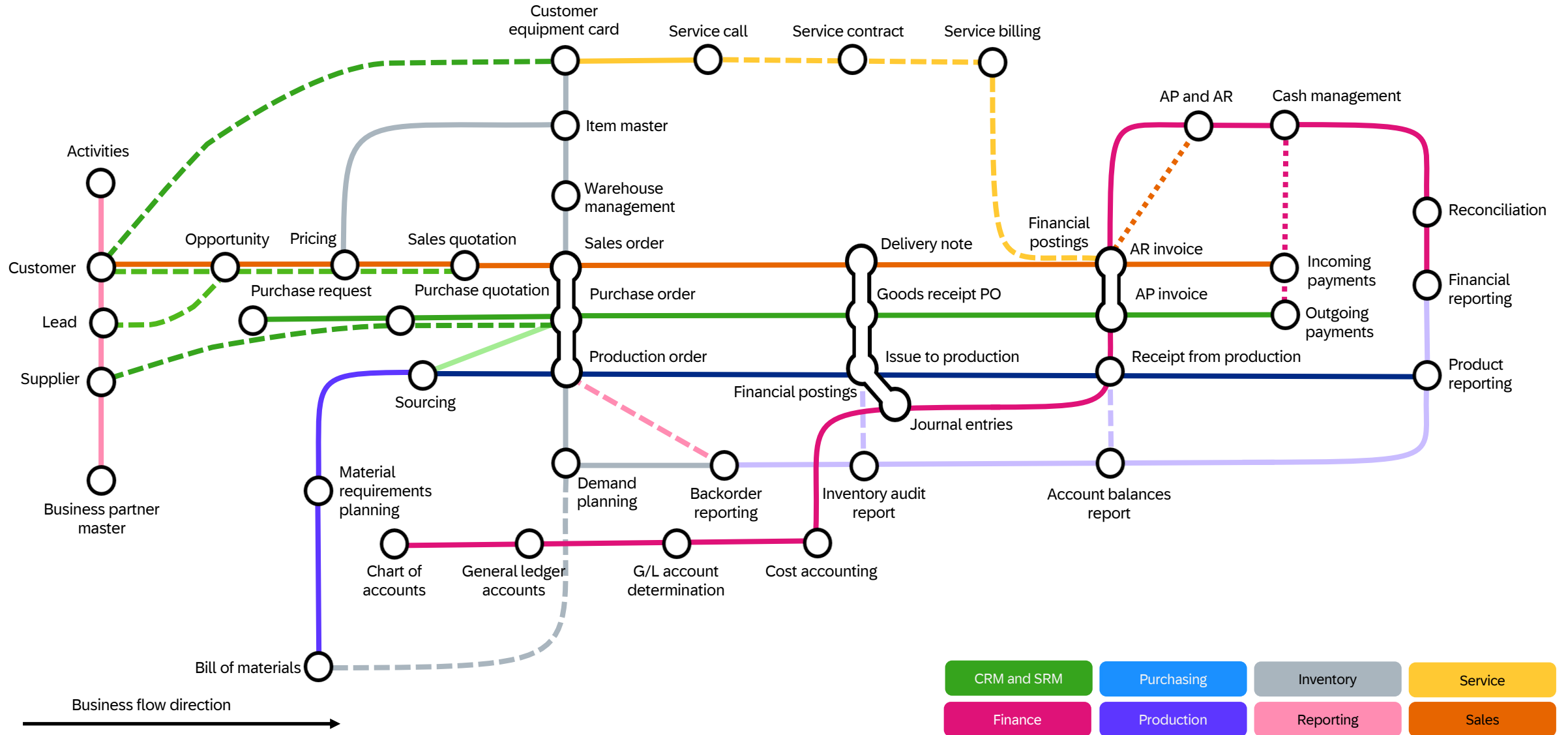
# SAP Business One: Strong ERP core for SMEs designed to ease extending and complementing

## Digital enablers (enrich and extend the core):

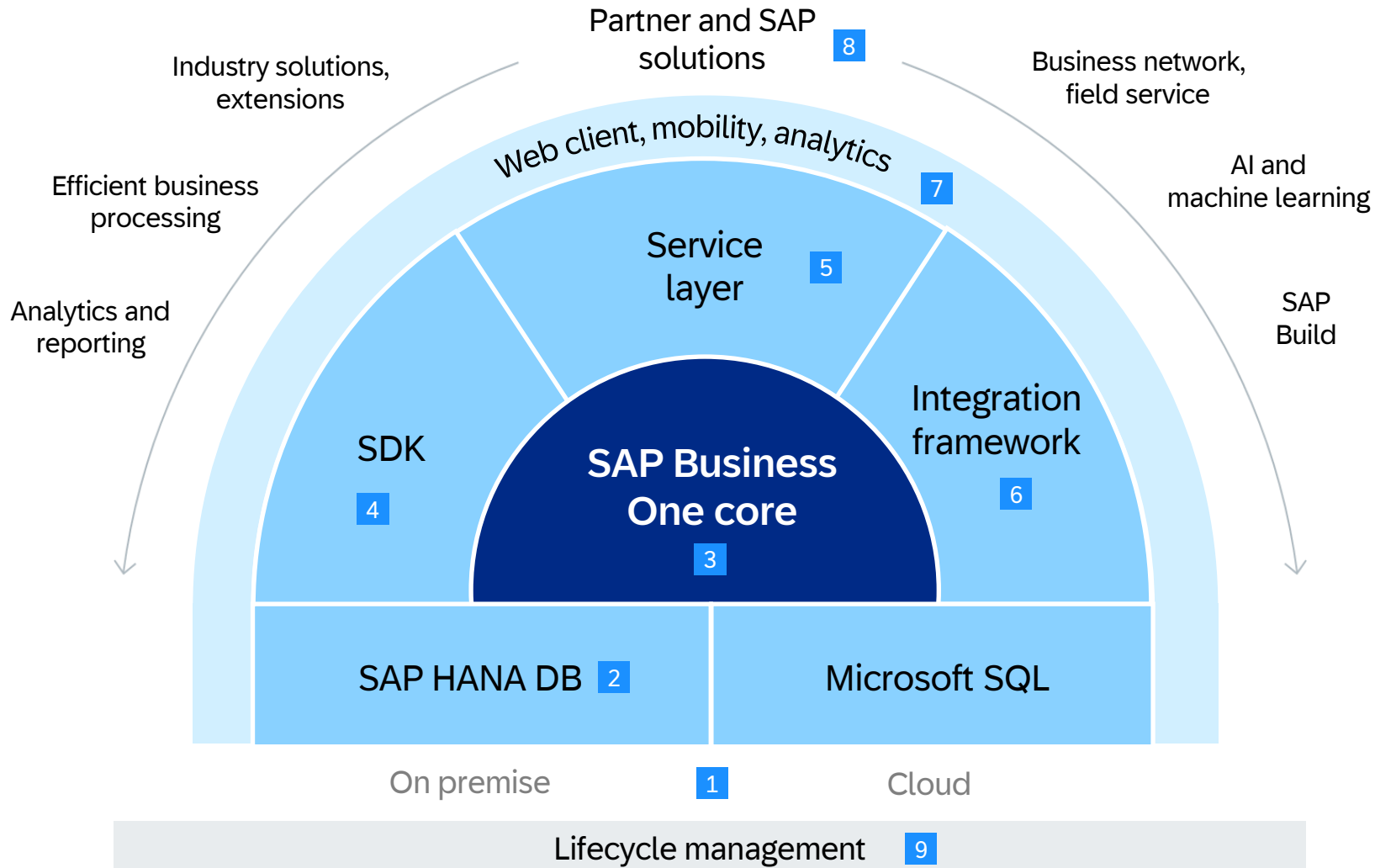
- AI and machine learning
- SAP Business Technology Platform (SAP BTP) cloud services
- Analytics
- Mobile technologies



# SAP Business One process metro map



# SAP Business One solution



## Cost

- 9 Low cost of ownership and efficient support + cloud control center

## Usability

- 7 Web client
- 7 Modern front end and analytics

## Comprehensive business scope

- 3 All standard business processes covered
- 8 Extending the solution scope based on extensibility layer
- 6 Robust integration and collaboration relying on service layer and software development kit (SDK)
- 4 Basic application programming interfaces (APIs)

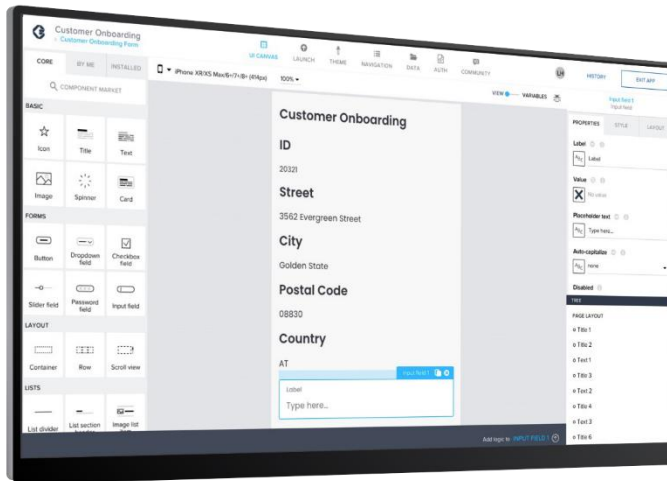
## State-of-the-art technology

- 2 Running on in-memory technology
- 5 Interface for SAP HANA and Microsoft SQL applications
- 1 Full deployment flexibility

# SAP Build

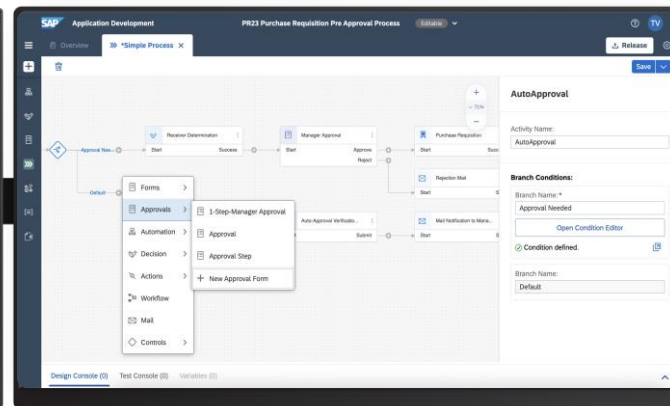
Create enterprise apps, automate processes, and design business sites with drag-and-drop simplicity

Compose apps



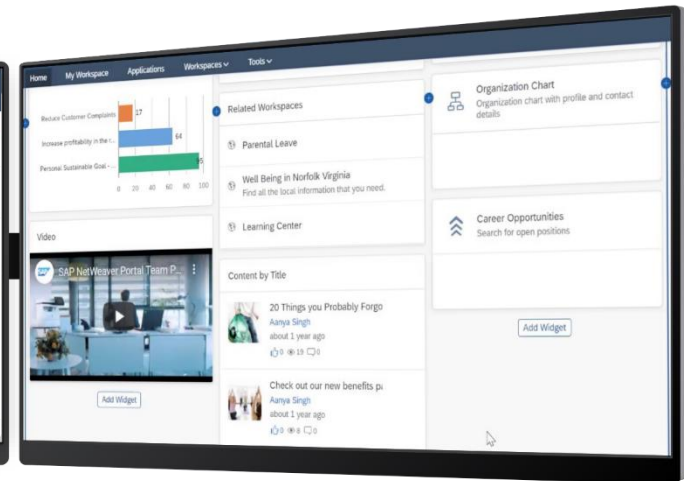
SAP Build Apps

Automate processes

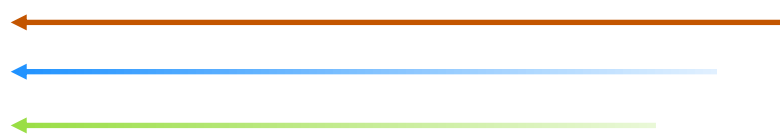


SAP Build Process Automation

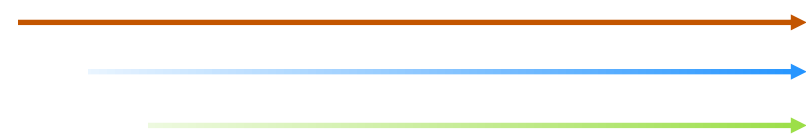
Design business sites



SAP Build Work Zone



Build visually  
Integrate smoothly  
Collaborate securely



**SAP Business Technology Platform**

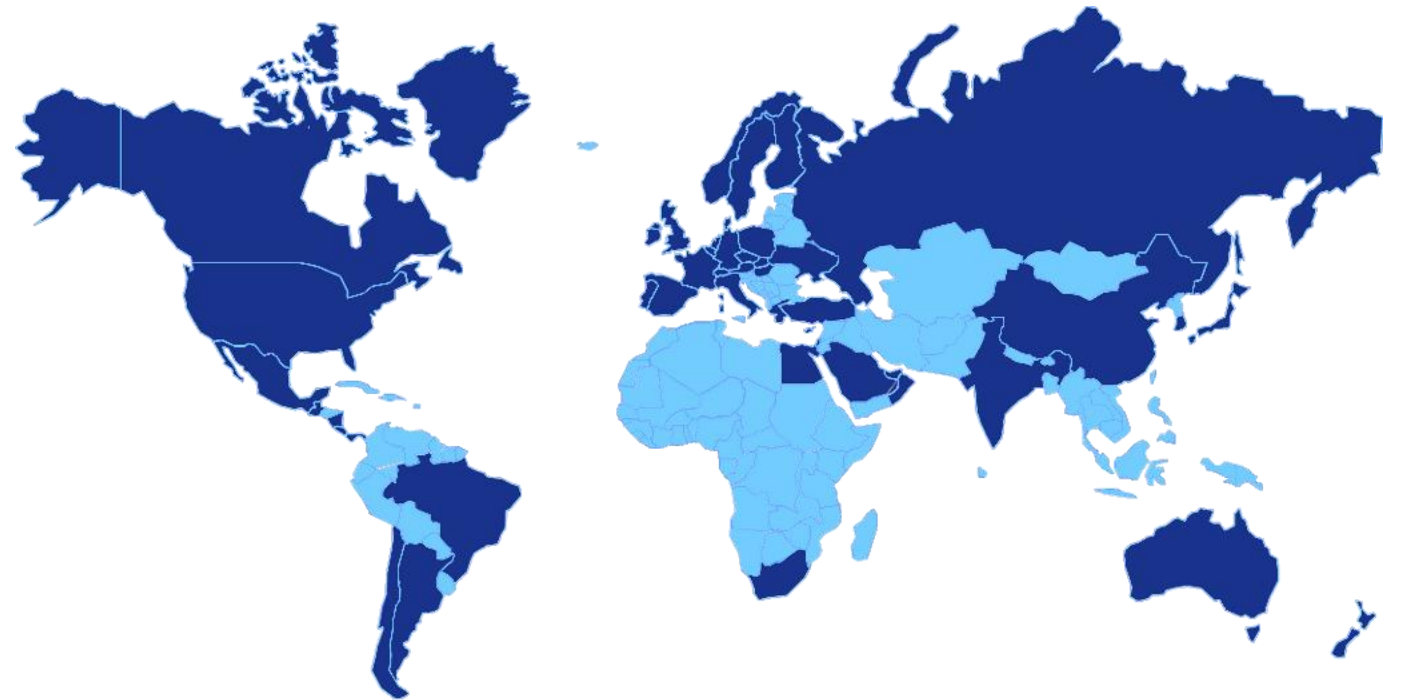
**SAP Business Technology Platform** brings together application development, data and analytics, integration, and AI capabilities into one unified environment optimized for SAP applications.

# SAP Business One used in more than 170 countries

## Master the challenge of globalization in your business

### Current localizations (50)

Argentina	Finland	Mexico	Slovakia
Australia	France	Netherlands	South Africa
Austria	Germany	New Zealand	South Korea
Belgium	Greece	Norway	Spain
Brazil	Guatemala	Oman	Sweden
Canada	Hong Kong, China	Panama	Switzerland
Chile	Hungary	Poland	Turkey
China	India	Portugal	Ukraine
Costa Rica	Ireland	Puerto Rico	United Arab Emirates
Cyprus	Israel	Qatar	United Kingdom
Czech Republic	Italy	Russia	United States
Denmark	Japan	Saudi Arabia	
Egypt	Lebanon	Singapore	



### Countries making use of localizations

Customers in more than 120 countries use localization of other countries, own customization, or a partner solution.

### Current system languages (28):\*

Arabic, Chinese (simplified and traditional), Czech, Danish, Dutch, English (UK and U.S.), Finnish, French, German, Greek, Hebrew, Hungarian, Italian, Japanese, Korean, Norwegian, Polish, Portuguese (Brazil), Portuguese, Russian, Slovak, Spanish (Latin America), Spanish, Swedish, Turkish, and Ukrainian

\*A convenient option for making additional languages available is using a partner solution (for some countries bundled with functional add-ons) or to define customer-specific UI terms using the custom language tool as detailed in SAP Note [1757764](#).

# Recent innovations

PUBLIC

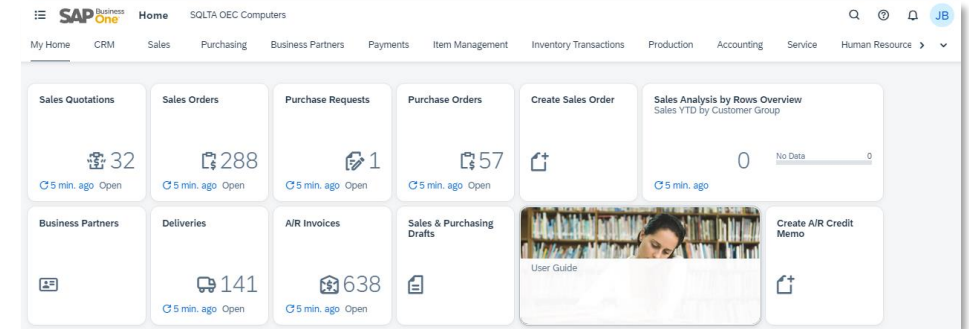
This presentation and SAP's strategy and possible future developments are subject to change and may be changed by SAP at any time for any reason without notice. This document is provided without a warranty of any kind, either express or implied, including but not limited to the implied warranties of merchantability, fitness for a particular purpose, or noninfringement.



# SAP Business One, Web client: The best of all worlds

## Web client benefits

- Supports smooth working with SAP Business One using native Web browser
- Offers the core business logic and processes in a new user experience based on the SAP Fiori design system
- Reads and writes from and to the same company database used with SAP Business One

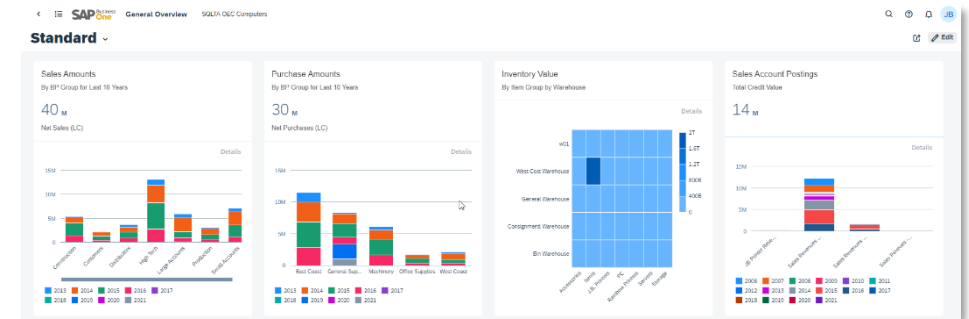


## Business processes coverage

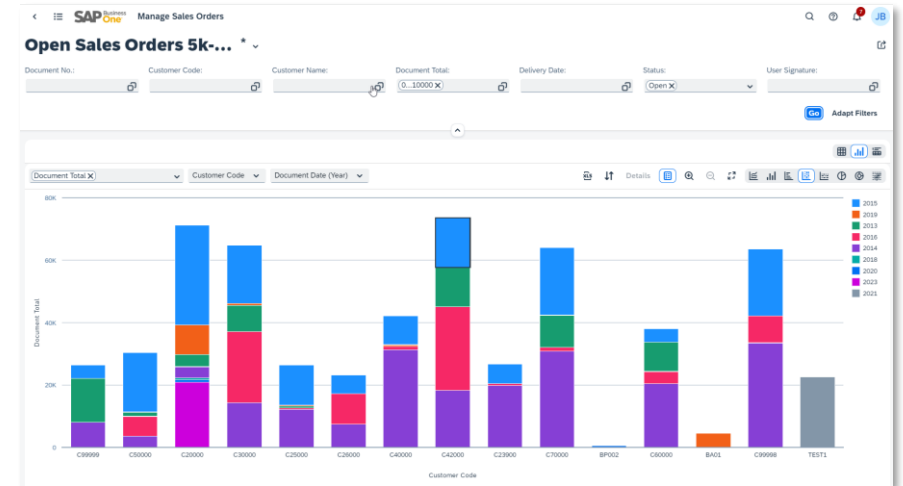
- Sales and purchasing documents
- CRM, service, and timesheet
- Payments and journal entries
- Items and business partners master data
- Inventory documents and bill of material
- Document drafts and approval process
- Sophisticated analytics capabilities

## Integration and extensibility

- Microsoft 365 OneDrive export (Excel, Word)
- Collaboration using Microsoft Teams
- E-mail using Microsoft Outlook 365
- Basic extensibility
- SAP Companion service (Web assistant) adoption



# SAP Business One, Web client: Analytics



## Streamline business processes with analytics

- Analytics in the Web client for SAP Business One empowers the user in a simple approachable way
- Comprehensive off-the-shelf business process modeling
- User able to build screens to fill most missing micro-business-process steps



# SAP Business One, Web client: Analytics

## Powerful analytics at the tip of your fingers

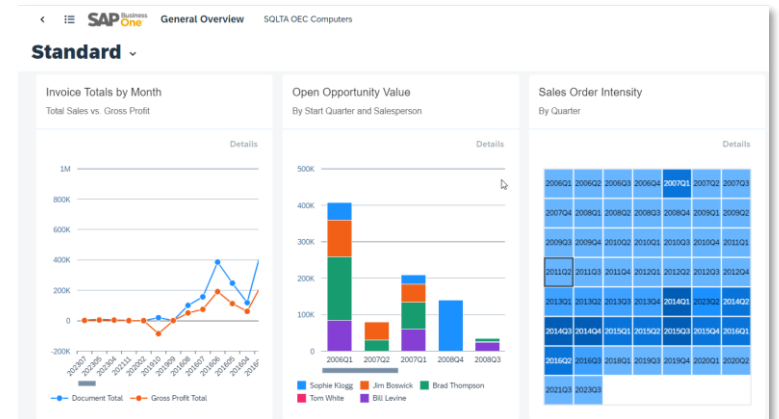
### List view: Object-centered analytics

Use sophisticated filtering and visualization capabilities for deriving and presenting the data you need in every object list view

Document No.	Customer Code	Customer Name	Posting Date	Due Date	Document Total	Status
1071	C2000	Maxi-Reg	05/23/2023	06/22/2023	318.00	Open
1070	C2000	Maxi-Reg	05/23/2023	06/22/2023	318.00	Open
1069	C2000	Maxi-Reg	05/23/2023	06/22/2023	318.00	Open
1068	C2000	Maxi-Reg	05/23/2023	06/22/2023	2,544.00	Open
1067	C2000	Maxi-Reg	05/23/2023	06/22/2023	4,770.00	Open
1066	C3900	Parameter Technology	04/30/2023	05/30/2023	1,908.00	Open
1065	C3900	Parameter Technology	04/30/2023	05/30/2023	1,908.00	Open
1064	C3900	Parameter Technology	04/30/2023	05/30/2023	1,908.00	Open

### General overview: Gather multiple data sources

Design cards based on any list view, analytical chart, user-defined objects and tables, or user-defined query, showing the data you need from various aspects



### Export and import views: Collaborate across companies

Export selected views (and links) to a file that can be imported into other company databases



### Share by e-mail: Collaborate among users

Embed a direct link to any view, general overview, or UDQ in e-mail body and send to your colleagues

### User-defined queries (UDQs)

Manage, create, edit, and preview UDQs; presented as standard list view and can be leveraged as a data source for cards on general overview

#	Name	Description	Type	Aggregation	Decimal Places	Link To	Match Unique ID With	Original
1	CardName	BP Name	Dimension	None	None		<input checked="" type="checkbox"/>	OEML_CardName
2	ObjType	Object Type	Dimension	None	None		<input checked="" type="checkbox"/>	OEML_ObjType
3	EMMailAddr	E Mail Address	Dimension	None	None		<input checked="" type="checkbox"/>	OEML_EmailAddr
4	SendDate	Send Date	Dimension	None	None		<input checked="" type="checkbox"/>	OEML_SendDate
5	SendTime	Time Sent	Dimension	None	None		<input checked="" type="checkbox"/>	OEML_SendTime
6	U_NAME	User Name	Dimension	None	None		<input checked="" type="checkbox"/>	OEML_U_NAME

### Linked views: Contextual analytics

Assign any view, general overview, or UDQ to any object to derive record-specific data

# Identity and authentication management

SAP Business One introduces the **identity and authentication management (IAM)** service, allowing users to authenticate with their identity provider (IdP) user when signing in to SAP Business One.

## Main benefits of using IAM in SAP Business One:

- Enhanced security during sign-in
- Utilization of IdP's multi-factor authentication and reduction of potential for attack
- Reduced password fatigue – users don't need to remember an excessive number of passwords
- Single sign-on experience, supporting market-leading IdPs:
  - Azure AD
  - ADFS
  - Okta
  - SAP's identity authentication service (beta)
- Central user management across companies and optimal license allocation
- Solid integration with extensions
- Enhanced sign-in user experience



SAP Help



Blog



YouTube



# Intelligent automation for SAP Business One

The **SAP Build Process Automation solution** helps you maintain your edge, and the **AI services** free up your employees from repetitive and error-prone tasks.

## Embedded business cases:

### Intelligent invoice scanning **including templates**

- Business partners creation **and update** based on business-card scanning

## Side-by-side business cases:

- Seven automation best-practice templates (**including product return request automation workflow**)



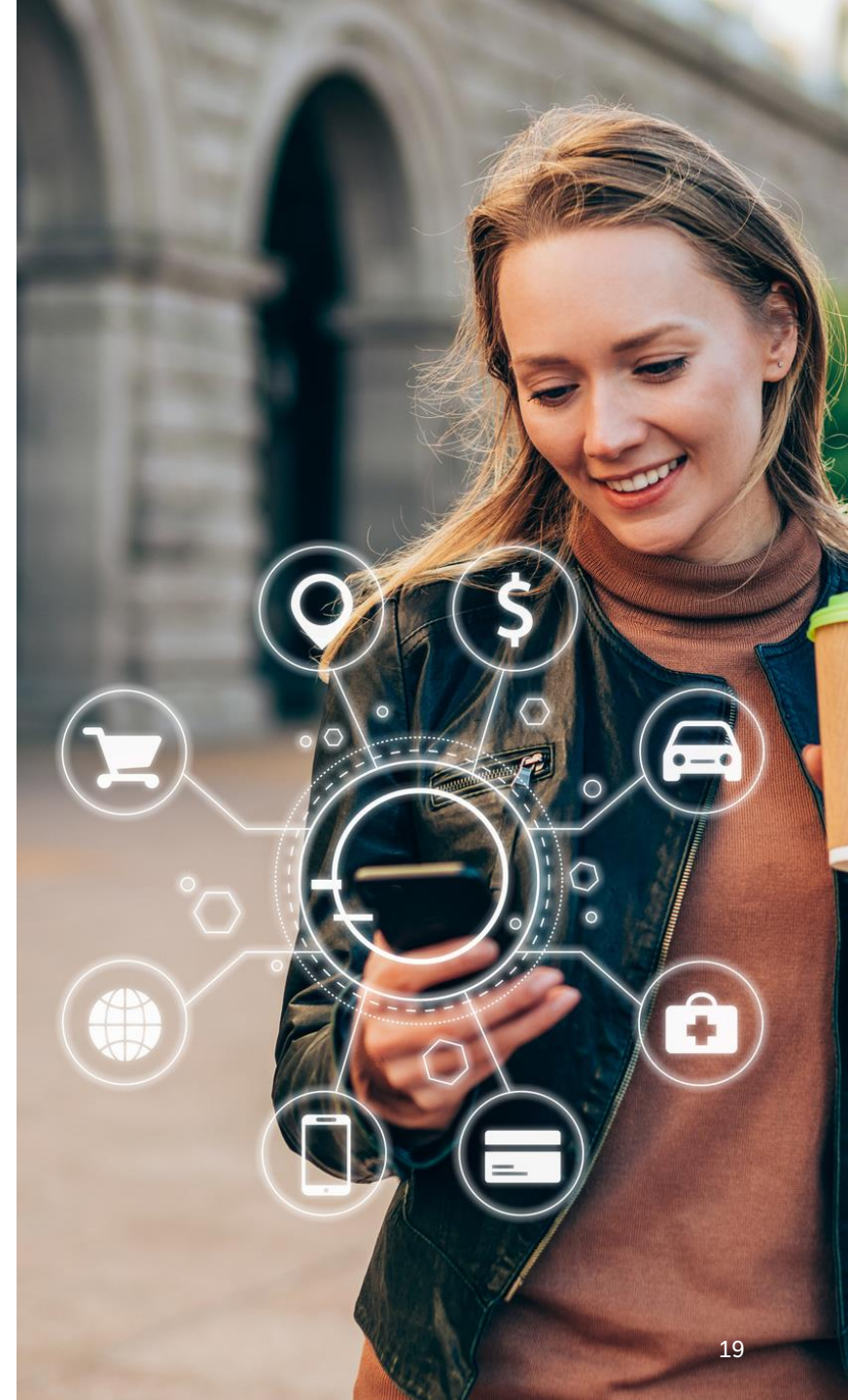
openSAP



SAP Help

PUBLIC

This presentation and SAP's strategy and possible future developments are subject to change and may be changed by SAP at any time for any reason without notice. This document is provided without a warranty of any kind, either express or implied, including but not limited to the implied warranties of merchantability, fitness for a particular purpose, or noninfringement.



# SAP Business One 10.0: Key highlights up to SP 2311 (1/6)

## Web client

### Document support

- Sales documents: Quotations, orders, deliveries, returns, return requests, A/R invoices, A/R reserve invoices, and A/R credit memos
- Purchasing documents: Purchase requests, quotations, orders, goods receipt POs, goods returns, goods return requests, A/P invoices, A/P reserve invoices, and A/P credit memos
- Inventory documents: Goods issues, goods receipts, and inventory counting

### Analytics enhancements

- Advanced analytics content and editor incl. import and export views
- User-defined queries
- Linked list views

### Technological enhancements

- Enterprise search: Supported on SAP HANA
- Support for single sign-on

### Functionality

- Outgoing SnB/bin location selection
- Service calls and solution knowledge base
- Relationship map
- Document opening and closing remarks
- Approval process and drafts incl. approvers
- Business partner (BP) and item master data
- BP catalog number and bar code
- Multiple branches
- Freight charges
- Exchange rate entry
- Authorizations and data ownership
- Incoming and outgoing payments
- Activities and notifications
- Bill of materials (BOM)
- Journal entry
- Equipment card and service contract
- Alternative items
- Timesheet
- Opportunities
- Packing slip

### Usability enhancements

- Customizable home page
- Flexible list views
- Special lines in marketing documents
- Predefined texts
- 28 display languages
- Message preferences
- High-contrast UI theme and Horizon theme
- Attachment management
- SAP Companion adoption
- Microsoft 365 integration to OneDrive (Excel, Word)
- Outlook 365 integration
- Business-card scanning with Document Information Extraction service
- KPIs display in user-defined tiles
- Support for APIs for new views
- Support for “Display in menu” setting for UDTs
- User-defined fields, tables, and objects
- VSCODE plug-ins (URL mashup, apps), iFrame as a tile support

# SAP Business One 10.0: Key highlights up to SP 2311 (2/6)

## Localizations | Legal compliance

- Support for external VAT calculation\*
- Bank statement processing (BSP) enhancements
- Journal entries series for the period-end closing/exchange rate difference and conversion differences transactions
- EU PEPPOL electronic invoicing support
- Cargo tracking and tracing enhancements (EU)
- SAP Crystal Reports software layouts for Switzerland
- Audit file (FEC) enhancements for France
- VAT API for Denmark
- SAF-T report for Denmark (mandatory information)
- SAF-T tax report for Norway
- SAF-T report for Portugal
- Electronic invoice and electronic payments ATCUD support for Portugal
- Electronic signing for electronic invoices for Portugal
- Online invoicing enhancements for Hungary
- E-books incl. online sales reporting with duty and expense classification enhancements for Greece
- XRechnung e-invoices for Germany
- Electronic invoice/KSeF for Poland
- Certificazione Unica enhancements for Italy
- Digital signature support for Israel
- Electronic Invoice for Israel
- New tax for one-use plastics for Spain and the United Kingdom
- Fraud prevention headers version 3.0 (MTD) support for the United Kingdom
- Down payment invoice tax calculation enhancement for the United States and Canada
- Withholding tax enhancements for Mexico
- Folio enhancements for Chile
- Tax setup APIs for Brazil
- Electronic check introduction in Argentina
- A/P down payment request and accumulation to support e-TDS for India
- Qualified invoice method for Japan
- Transmitting GST return for Singapore

\*All localizations except Israel

# SAP Business One 10.0: Key highlights up to SP 2311 (3/6)

## Inventory | Distribution | Production

- Serial and batch numbers mgmt. enhancements
- Ability to change unit of measure (UoM) group of an item
- Additional authorization groups for price lists
- Item group name extended to 100 characters
- Support setting UoM group as inactive
- Reverse and forward serial and batch no. trace report
- FIFO layers report by consumption order
- Drill-down from BOM to item master data
- Inventory counting enhancements
- Extending field length of item description and industry
- Modifying remarks and unified demand forecasts (UDFs) in closed production orders and pick lists
- Support for mass deletion of BOM
- Procurement confirmation wizard based on production orders
- Changing status of sales and purchase type in item master data
- Opening last prices report from item master data
- Displaying preferred vendor name in item master data
- Support for attachments for bill of materials

## Financial management

- Drill-down to G/L accounts in financial reports
- Posting periods enhancements
- Journal entry remarks extended to 254 characters
- System messages before adding journal entries
- Extended journal entry references
- Updated journal entries with locked posting periods
- Enhanced printing preferences for payments and deposits
- Report refresh enablement
- Management of change log for exchange rates
- IFRS postings for fixed assets
- Tax code determination enhancements in procurement process

# SAP Business One 10.0: Key highlights up to SP 2311 (4/6)

## Sales | Purchasing | Service

- Allowing update due date in partially reconciled invoices
- “Add and view” and “Add and close” in A/R and A/P docs
- Printing service calls and contacts
- Hiding blank lines in addresses
- Proc. confirmation wizard support for gross and net modes
- Enabling updating UDFs in closed documents
- Setting problem types, call status, and more as “Active”
- Flexible default “Valid until” date in sales quotation
- Linking single equipment card to multiple BPs
- New document status “Open e-mailed”
- Storing price list no. and name in marketing documents rows

- Extended business partner effective price sources
- Ability to hide document remarks
- Copying attachment paths to target documents
- Cancellations of return requests
- Updating consolidating business partner and consolidation type at document level
- Customer and vendor reference number enhancement
- Document information extraction integration enhancement incl. service-type document support
- Display of sales document in procurement wizard if target document is canceled
- Relationship map support for reference documents and opportunity
- Moving rows up and down in marketing documents

## CRM

- Customer and vendor group name extended to 100 characters
- Viewing and updating address UDFs in docs, service calls, and address format setup
- Support for filtering activity reports by UDFs
- Link between contact person and BP address
- Hiding inactive contact persons in BP master data
- Configuring display of employee name
- Telephone field extended to 50 characters
- Foreign name field extended to 200 characters

## Project management

- Interactive Gantt chart
- Sorting order for project stages

# SAP Business One 10.0: Key highlights up to SP 2311 (5/6)

## Administration

- Support for attachments tab in additional objects
- Deleting live collaboration history by date range
- Enhancements in approval process
- Hiding employee no. to support data protection and privacy
- Setting warning for single-user validation
- Deactivation of shipping types
- Hiding locked users
- Enhanced user removal management
- Open users – set up form in “Find” mode
- Messages and alerts cleanup tool
- Manual determination of path in general settings
- Adding detailed errors for license imports
- Enhancing license balloon appearance

- Main menu form settings for indirect access users
- Sort forms in user interface configuration template
- Support for "Hide BOM in component" in SAP Crystal Reports layouts
- Enhanced copy of single form settings
- Allowing change log to read-only documents
- Enabling retrieval of a default value of an SAP Crystal Reports parameter
- BP payment terms without price lists
- Change log enhancements for employee master data
- Managing change log for system setup entries
- Providing parameters for dunning letters in SAP Crystal Reports layouts

## Authorization enhancements

- Tab-level authorizations in business partner and item master data
- Support for “Find next” function in authorizations form
- Change log entries for authorization user groups
- Authorization to use “Copy table”
- Authorizations for duplicate documents and records
- Authorizations in payments draft report
- Adding authorization to “Remove opportunity”
- Increased number of authorization groups
- New authorizations for timesheet



# SAP Business One 10.0: Key highlights up to SP 2311 (6/6)

## Platform | Extensibility

- **SAP HANA 2.0 adoption**
- **Support for SUSE Linux Enterprise Server 15**
- **Service layer configuration UI**
- Service layer support for Microsoft SQL database server
- Service layer support for views on Microsoft SQL
- User-defined values supporting multiple triggers
- Extending UDF support to additional objects
- Microsoft 365 integration
- Increasing menu item limit to 2,000
- Extend DI API and service layer coverage
- API access for CR reports
- Integration hub
- Security enhancements
- Support for Microsoft SQL 2019
- Extending service layer coverage
- Linking UDFs to system forms and user-defined objects
- Enabling DI access to system permissions
- Support for Visual Studio 2019 with SAP Business One studio
- Enhancing UI API error handling
- Support for queries through service layer
- Adding queries to menus
- Sizing guide for service layer
- Unification of installation and upgrade packages for SAP Business One
- Query manager enhancements
- Support for SAP Crystal Reports 2020 SP2
- Checkbox type for user-defined field

**Bold = SAP HANA**

## Usability

- **New skin style**
- Enhanced user interface
- User name in license and add-on administration
- **Support for 4K monitors**
- Revised SAP Fiori UI for Service and Sales mobile app

## Lifecycle management | Cloud

- Identity and authentication management introduction
- Microsoft Windows 11 support
- **SAP Business One, version for SAP HANA supporting SUSE Linux Enterprise Server 15 SP4**
- Password policy requirements for new installations

# Product direction

PUBLIC

This presentation and SAP's strategy and possible future developments are subject to change and may be changed by SAP at any time for any reason without notice. This document is provided without a warranty of any kind, either express or implied, including but not limited to the implied warranties of merchantability, fitness for a particular purpose, or noninfringement.



**“SAP Business One is part of SAP’s cloud ERP strategy addressing customers in the small business and lower midmarket segment, while SAP S/4HANA Cloud tackles the midmarket and large enterprise customers. New cloud innovation and extensions working across SAP’s cloud ERP portfolio will leverage SAP Business Technology Platform (SAP BTP).**

**We are making SAP Business One fit for the next decade**, investing in essential product qualities. Additionally, we are enabling SAP BTP for the midmarket requirements, driving digital transformation and cloud services adoption.

**We encourage members of SAP’s cloud ERP ecosystem to build their extensions on SAP BTP the same way SAP is using our platform to build new capabilities and make the cloud ERP portfolio a rich customer experience.”**

Oliver Bahner, Senior Vice President and Head of SAP Midmarket & Ecosystem Success Unit, SAP SE  
January 2024

# SAP Business One: Product areas of future investment

**Vision:** Strengthen SAP Business One as the ERP solution for small business and lower midmarket, offering flexible deployment models including partner-managed cloud, a solid global business core, enabling cloud extensions (SAP BTP and SAP Build), and a leading user experience.

## Global and highly scalable real-time ERP

---

- Offer a highly competitive solution
- Provide attractive maintenance model
- Support enhanced localizations
- Make continuous improvements

## Streamlining customer value

---

- Transform flexible technology and innovations into customer value at low TCO
- Support fast adoption of new business models, customer growth, and intuitive Web client design

## Leveraging SAP HANA

---

- Further leverage exclusive advantages and capabilities of SAP HANA (enterprise search, advanced analytics)

## Partner co-innovation and extensions

---

- Support innovation driven by SAP Build and SAP BTP
- Support robust developer experience on the service layer, including new design concepts, APIs, objects, and tools

## Flexible deployment model – cloud, on premise

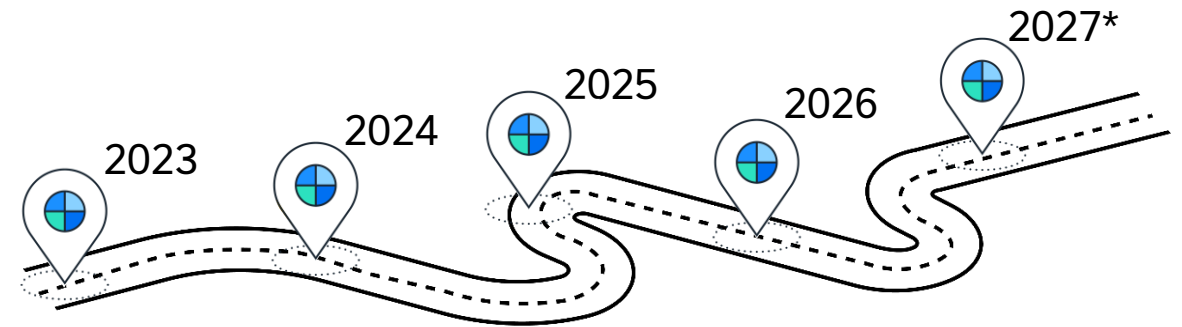
---

- Accelerate cloud transformation and drive mobile adoption
- Extend partner-managed cloud tools
- Provide maximum flexibility, low complexity, and best control of the business for customers

# SAP Business One releases and related products

Solid product road map with continuous innovation

**SAP Business One** – Continuous enhancements through version 10 feature packages (FP) and support packages (SP)  
(version for SAP HANA and Microsoft SQL)



**Cloud** – Continuous enhancements for SAP Business One Cloud, partner-hosted options

**Web client** – Support for working smoothly with SAP Business One using native Web browser

**Mobile apps** – Continuous enhancements for all mobile apps

The latest SAP Business One release planning details are always available in SAP Note [2267770](#).

\*This is the current state of planning and may be changed by SAP at any time. Version 11 to follow after Version 10. More details on the schedule to be shared in 2024.

# SAP Business One

## Product road map overview: Key themes and capabilities

### Recent Innovations

#### Core

- Web client extended sales, purchasing, service, inventory, and analytics functionality
- Continuous innovations based on market feedback (Customer Influence program)
- Enabling workflow integration with SAP Business One based on SAP Build Process Automation bots with SAP-delivered scenario “Return request” workflow
- Enabling document templates with SAP Build Process Automation for SAP Business One
- Microsoft Teams integration

#### Globalization

- Electronic documents certificate management enhancements
- India – A/P down payment request support for e-TDS deduction
- Denmark – Software registration support
- Greece – E-books stamp duty support enhancements
- Argentina – Electronic invoice enhancements
- Israel – Electronic invoice 2024 support
- Poland – Electronic invoice 2024 (KSeF)
- Spain – Support for new tax for one-use plastics
- Japan – Qualified invoice method support enhancements

#### Mobile

- Service and sales apps update for Microsoft SQL Server, iOS, and Android

#### Extensibility and platform

- Identity and authentication management introduction
- Enhanced service layer API including support for Microsoft SQL
- Microsoft 365 integration (Word, Excel, OneDrive)
- Windows 11 support

#### Cloud

- Tenant configuration wizard

### Planned innovations <sup>1</sup>

#### Core

- Web client extended sales, purchasing, payments, service, financials, production, inventory, analytics, and administration functionality
- A/P invoice creation automation using Document Information Extraction service in the Web client
- Continuous innovations based on market feedback (Customer Influence)
- Outlook 365 integration enhancements
- SAP Digital Currency Hub integration

#### Globalization

- Electronic documents service enhancements
- Integration with SAP Document and Reporting Compliance solution
- Germany – ELSTER: Adoption of new ERIC versions
- Israel – Electronic invoice 2024 enhancements
- Poland – Electronic invoice 2024 (KSeF) enhancements
- France – Electronic invoice 2025
- Spain – Electronic invoice enhancements
- Spain – Software certification support
- Italy – Packaging tax support
- India – Multiple e-TDS support
- Singapore – Submission of GST return enhancements
- China – Golden tax enhancements

#### Extensibility and platform

- Enhanced service layer API
- Web client extensibility
- MS SQL 2022 support

#### Cloud

- Introduce IAM in SAP Business One Cloud control center

### Product direction <sup>1</sup>

#### Core

- Extended Web client business process coverage
- Continuous innovations based on market feedback (Customer Influence)
- Optimized scalability and performance
- Simplification of landscape and deployment, support for containerization approach

#### Globalization

- Enhancement of existing markets and regions
- Integrations to electronic fiscal services
- IFRS compliance

#### Analytics

- Insight to action (data mining)
- Predictive, pervasive, and scalable
- Built-in content

#### Mobile

- Continuous innovations based on market feedback

#### Extensibility and platform

- Enhanced service layer API
- Enhanced Web client extensibility
- Event service support

#### Cloud

- Reduction of TCO

# SAP Business One

What's coming next: Outlook on core solution delivery for the next release (SP 2402/FP 2405)\*

## Business processes and legal compliance

---

- High-value improvement requests (Customer Influence)
- PEPPOL business-level response
- Acceptance process support for Celnv for Argentina
- E-billing integration for India
- OSA B1i package to EDS connector for Hungary
- Token-based authentication for KSeF for Poland
- Electronic invoice scenario – support for invoice responses and purchase orders for Singapore
- Correction VAT on return request for Belgium
- SendExpenses file to send in the aggregated way for Greece
- Electronic doc. communication package for Portugal
- Golden Tax interface update for China
- CIG + CUP adjustment for the documents for Italy
- Deductions on the periodic payments for Italy
- DATEV LW/GOBD export for Germany
- VAT return submission with API for Denmark

## Cloud and infrastructure

---

- Security compliance
- Extend service layer coverage
- Lifecycle management enhancements
- Support for IAM in cloud 1.1 PL 20

\* This is the current state of planning and may be changed by SAP at anytime without notice.

# SAP Business One

## What's coming next: Outlook on Web client delivery for the next release (FP 2405)\*

### Business processes

---

#### System configuration framework

- Extended setting and setup pattern
- Support for company details
- Initial setup support for system, inventory, and business partner

#### Extend usability support

- Support for rich text editor in long-text fields
- Support for “Alternative Item” line type
- Optimized rapid data entry

#### Business scope finetuning

- Marketing document enhancements
- Serial/batch/bin enhancements

### Extensibility

---

#### Web client user interface API (UI API)

- Web client initial UI API support
- VSCode plugin for UI API extension development, with document and example code

#### Simple user-defined value (UDV)

- UDV as static list
- UDV as simple expression without query

#### User-defined field setup

\* This is the current state of planning and may be changed by SAP at anytime without notice.



# Planned innovations: Core

## Global, highly scalable real-time ERP

### Feature

Optimize core business processes and continuously deliver enhancements and new features, based on [Customer Influence](#)

- Optimize functions in logistics and inventory
- Optimize functions in CRM and service
- Optimize functions in financial
- Enhance usability
- Enhance Microsoft 365 integration
- Integrate SAP solutions adding value for SAP Business One customers

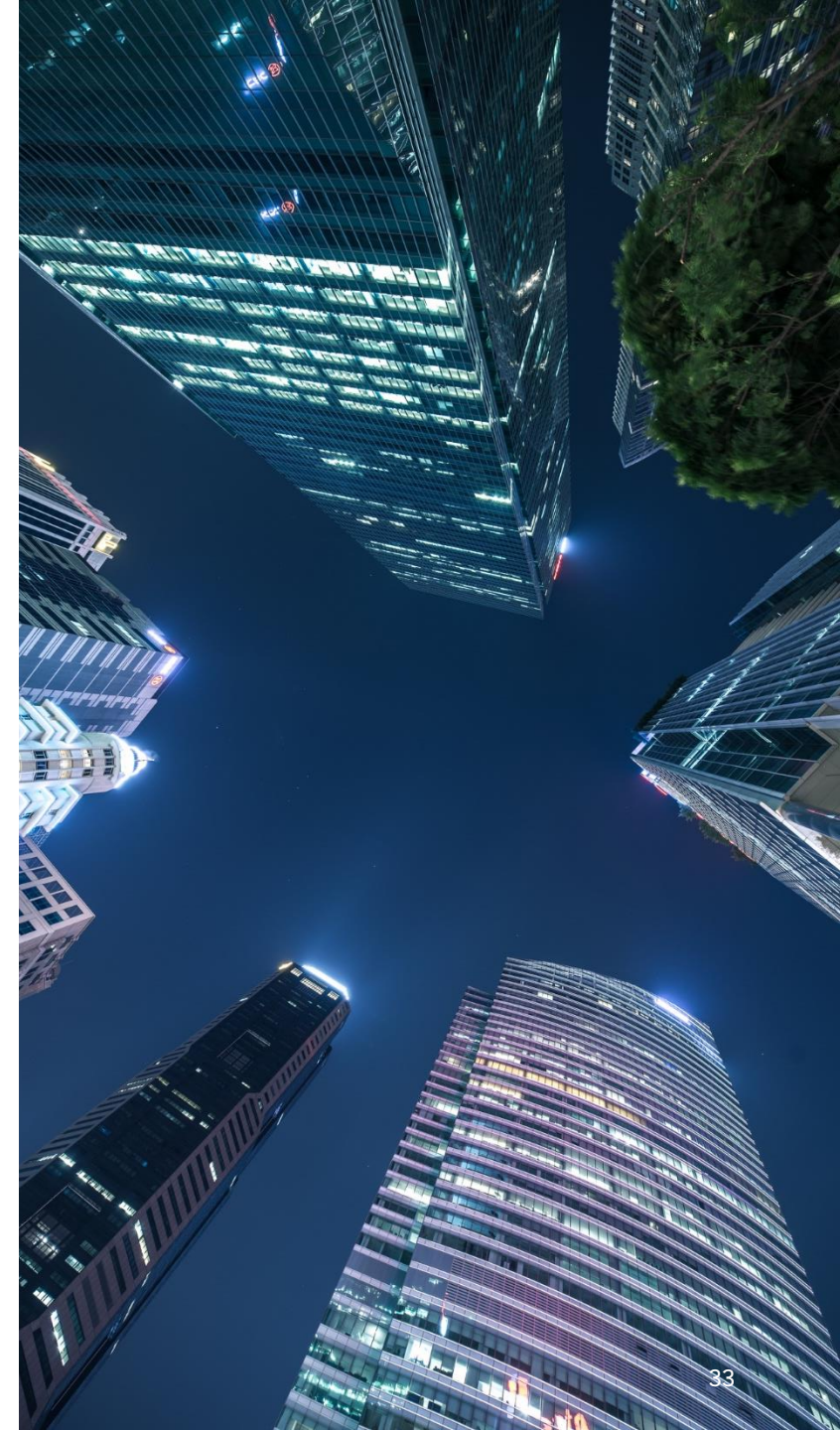
### Lifecycle management

- Optimize upgrade and installation processes
- Optimize identity and authentication management
- Optimize job service performance and monitoring capabilities
- Optimize data import functions
- Support MS SQL 2022

This is the current state of planning and may be changed by SAP at any time.

PUBLIC

This presentation and SAP's strategy and possible future developments are subject to change and may be changed by SAP at any time for any reason without notice. This document is provided without a warranty of any kind, either express or implied, including but not limited to the implied warranties of merchantability, fitness for a particular purpose, or noninfringement.



# Planned innovations: Web client

Extend functional scope to cover end-to-end scenarios

## Feature

### Extended business logic coverage and user experience

- Extended sales and purchasing coverage
- Service
- Financials
- Extended payments support
- Inventory management
- Project management
- Production
- Human resources
- Administration and setup
- New Horizon theme elements from SAP

### Analytics, reporting, and printing

- Extended analytics
- Additional reporting content
- Design capabilities
- Support printing

### Integration and extensibility

- Extensibility capabilities (such as UI API, user-defined values)
- Extended Microsoft 365 integration
- Extended Outlook 365 integration
- A/P invoice creation automation using Document Information Extraction service in the Web client

This is the current state of planning and may be changed by SAP at any time.

PUBLIC

This presentation and SAP's strategy and possible future developments are subject to change and may be changed by SAP at any time for any reason without notice. This document is provided without a warranty of any kind, either express or implied, including but not limited to the implied warranties of merchantability, fitness for a particular purpose, or noninfringement.



# Planned innovations: Globalization

## Legal compliance and localization enhancements

### Feature

- Legal compliance and localization enhancements generically or specifically (legal requirements, business practice, statutory reporting, and default values)
- Electronic documents framework enhancements and country-specific built-in content using the electronic file manager add-on, electronic documents service, and integration framework
- Electronic documents service component enhancements
- Further integration and leveraging of existing cloud services from SAP for legal adaptations, such as SAP Document and Reporting Compliance

### Country-specific changes:

- China – Golden Tax enhancements
- Denmark – Software registration support enhancements
- France – Electronic invoice 2025
- Germany – ELSTER: Adoption of the new ERiC versions
- India – Multiple e-TDS support
- Israel – Electronic invoice support enhancements
- Italy – Packaging tax support
- Poland – Electronic invoice 2024 (KSeF) enhancements
- Singapore – Submission of GST return enhancements
- Spain – Electronic invoice enhancements
- Spain – Software certification support

This is the current state of planning and may be changed by SAP at any time.

PUBLIC

This presentation and SAP's strategy and possible future developments are subject to change and may be changed by SAP at any time for any reason without notice. This document is provided without a warranty of any kind, either express or implied, including but not limited to the implied warranties of merchantability, fitness for a particular purpose, or noninfringement.



# Planned innovations: Extensibility

Extend SAP Business One for verticals and custom scenarios

## Feature

### SAP Business One core

- Enhancement of service layer API
- Web client extensibility (UI API, user-defined values)
- Side-by-side application support (SAP BTP enablement)

This is the current state of planning and may be changed by SAP at any time.

PUBLIC

This presentation and SAP's strategy and possible future developments are subject to change and may be changed by SAP at any time for any reason without notice. This document is provided without a warranty of any kind, either express or implied, including but not limited to the implied warranties of merchantability, fitness for a particular purpose, or noninfringement.



# Planned innovations: Identity and authentication management

Single sign-on experience across SAP Business One components

## Feature

### Identity and authentication management

- Introduce IAM in SAP Business One Cloud control center
- Support technical user authentication solution for partner extensions
- Create golden path for a “user propagation” scenario from SAP Business One to an SAP BTP application when working with SAP’s IAS IdP.
- Introduce password policy management for SAP Business One authentication service in system landscape directory
- Introduce "Forgot My Password" option in SAP Business One desktop and Web client
- Support advanced options for user creation and binding operations (user import from MS Excel)
- Edit option for existing IdPs in system landscape directory (SLD)
- Enhance central user management in SLD (for example, expose license dimension, show user inactivity)
- Support additional industry-leading IdPs

This is the current state of planning and may be changed by SAP at any time.

PUBLIC

This presentation and SAP's strategy and possible future developments are subject to change and may be changed by SAP at any time for any reason without notice. This document is provided without a warranty of any kind, either express or implied, including but not limited to the implied warranties of merchantability, fitness for a particular purpose, or noninfringement.



# Planned innovations: Integration framework

## An extremely strong platform

### Feature

#### Integration framework

- Identity and access management user authentication enhancements
- Role management introduction for integration framework
- Basic SAP S/4HANA Cloud integration
- Security enhancements

This is the current state of planning and may be changed by SAP at any time.

PUBLIC

This presentation and SAP's strategy and possible future developments are subject to change and may be changed by SAP at any time for any reason without notice. This document is provided without a warranty of any kind, either express or implied, including but not limited to the implied warranties of merchantability, fitness for a particular purpose, or noninfringement.



# Planned innovations: Mobile apps for the enterprise

## Support flexibility and efficient processes anywhere

### Feature

- Service app that allows ticket creation
- Use of native device capabilities of latest devices
- Evolving service layer into a platform for building innovative mobile solutions for verticals

This is the current state of planning and may be changed by SAP at any time.

PUBLIC

This presentation and SAP's strategy and possible future developments are subject to change and may be changed by SAP at any time for any reason without notice. This document is provided without a warranty of any kind, either express or implied, including but not limited to the implied warranties of merchantability, fitness for a particular purpose, or noninfringement.



# Planned innovations: Cloud

## Simpler consumption and best scaling

### Feature

#### SAP Business One Cloud, partner-hosted option

- Enhanced tools in SAP Business One Cloud 1.1 control center focusing on hosting partners, improvements for user experience, monitoring, and performance
- Support for IAM in SAP Business One Cloud 1.1 (for example, logging into SAP Business One components with external IdP using OIDC)
- Lifecycle management optimization (applying hot fixes, software component registration, service unit setup, maintenance window setup)
- Optimized partner support user functionality
- Security enhancements

#### SAP Business One Cloud, SAP-hosted option

- Support for advanced user authentication
- Security enhancements

This is the current state of planning and may be changed by SAP at any time.

PUBLIC

This presentation and SAP's strategy and possible future developments are subject to change and may be changed by SAP at any time for any reason without notice. This document is provided without a warranty of any kind, either express or implied, including but not limited to the implied warranties of merchantability, fitness for a particular purpose, or noninfringement.



# Learn more about SAP Business One

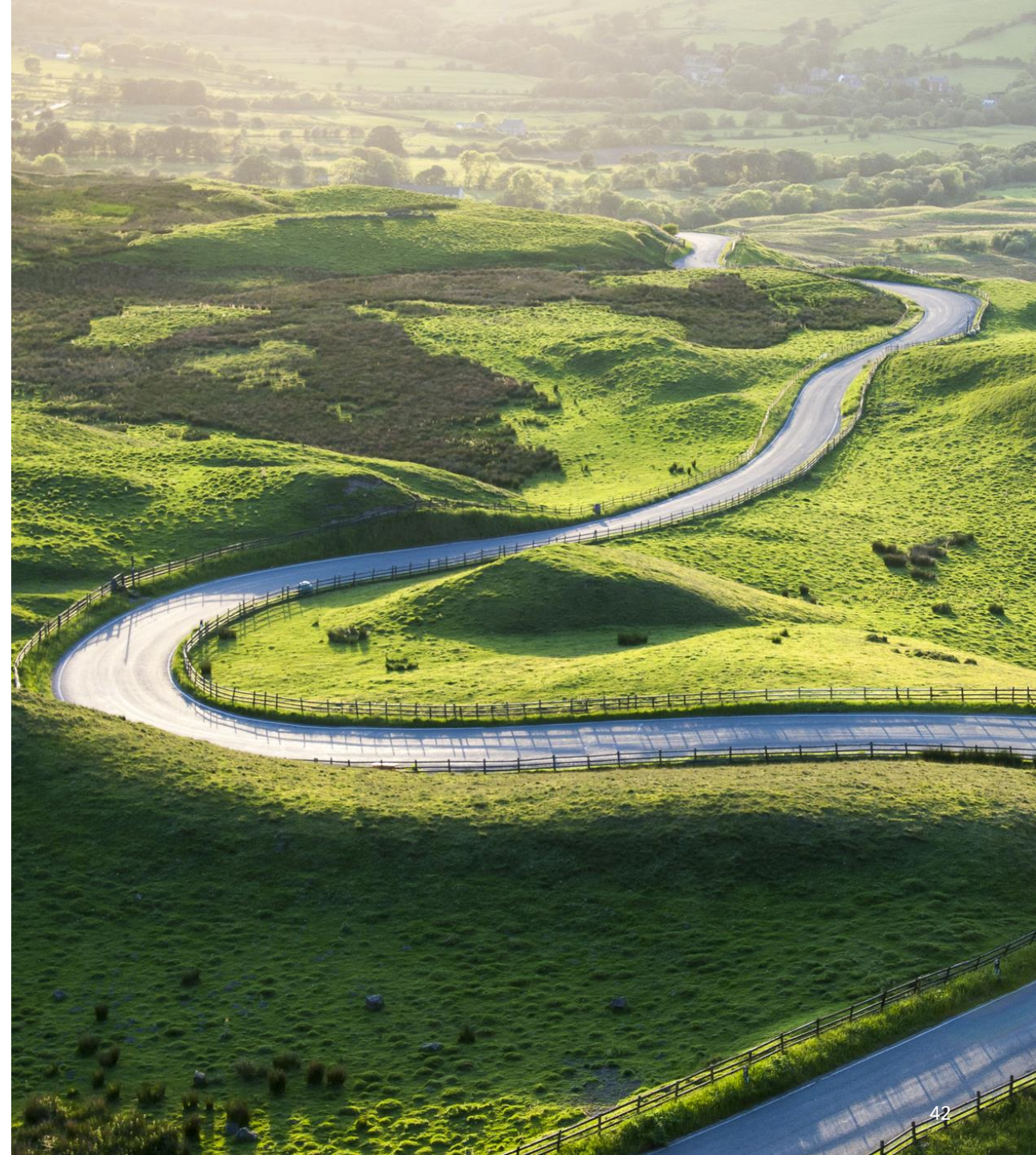
PUBLIC

This presentation and SAP's strategy and possible future developments are subject to change and may be changed by SAP at any time for any reason without notice. This document is provided without a warranty of any kind, either express or implied, including but not limited to the implied warranties of merchantability, fitness for a particular purpose, or noninfringement.



# Learn more about SAP Business One

- [SAP Business One YouTube channel](#)
- [Solution brief](#)
- [SAP Help Portal](#)
- [SAP Support Portal](#)
- [SAP Learning Journeys on SAP Learning Hub – for partners](#)
- [SAP Business One Academy on SAP Learning Hub – for the public](#)
- [SAP Community for SAP Business One](#)
- [SAP Business One Cloud](#) (partners only)
- [Customer Influence session](#) (customers and partners only)
- Central Web site for Web client content:  
<https://learnbusinessonewebclient.com/>
- [SAP Community for Web client analytics](#)



# Thank you.

